

# Greenbone Enterprise 6500

## Data Sheet



Greenbone

The **Greenbone Enterprise Appliance** is a vulnerability management solution that integrates seamlessly and transparently into your security strategy, providing vulnerability assessment and threat management capabilities.

It also detects violations of corporate security policies and regulations. With a strong focus on third-party integration and open standards, the Greenbone Enterprise Appliance is a best-in-class security solution that enhances and complements your security posture. Furthermore, it enables automated vulnerability management.

The **Greenbone Enterprise 6500** controls sensors for up to 40 security zones and covers up to 15,000 IP addresses. The operational area is large enterprise IT.



## Benefits

- Turnkey solution: simple and uncomplicated setup within shortest time
- Powerful appliance operating system Greenbone OS with specially adapted, console-based administration
- Integrated Greenbone Enterprise Feed with more than 150,000 vulnerability tests with daily, automated updates
- Integrated backup, restore and GOS upgrade
- Integrated web interface for scan management
- No limitation on number of target IP addresses (effective number depends on scan pattern and scanned systems)
- Subscription includes the Greenbone Enterprise Support, the Greenbone Enterprise Feed and updates

## Specifications

### Dimensions (including rack mounts)

- 440 mm x 550 mm x 88 mm

### Certification

- CE
- FCC Class A
- UL

### Environment

- Operating temperature:  
0 °C to 45 °C (32 °F to 113 °F)
- Storage temperature:  
- 20 °C to 80 °C (- 4 °F to 176 °F)
- Humidity: 10 % – 90 %  
(non-condensing)

### Connectivity

- Up to 4 modules, each with optional:
  - 8 ports GbE Base-TX (copper)
  - 8 ports 1 GbE SFP
  - 2 ports 10 GbE SFP+
- 1 port for serial console RS-232

### Construction

- 2U rack mount chassis, heavy-duty steel
- Redundant and hot swap: HDD, power, fans
- 16x2 character LCD

# Greenbone Enterprise 6500

## Data Sheet



Greenbone

### Scan Capacity

- Up to 15,000 IP addresses in 24 h
- Control of up to 40 sensors
- OpenVAS scanner for vulnerability tests and compliance audits
- CVE scanner for prognosis scans

### Supported Standards

- Network integration: SSH, SMTP (e-mail), SNMP, SysLog, LDAP, RADIUS, NTP, DHCP, IPv4/IPv6
- Vulnerability classification: CVE and CPE
- Severity classification via CVSS
- Network scans: WMI, LDAP, RADIUS, HTTP, SMB, SSH, TCP, UDP, etc.
- Compliance policies: CIS Benchmarks, IT-Grundschutz, BSI TR-03116 etc.

### Graphical Web Interface

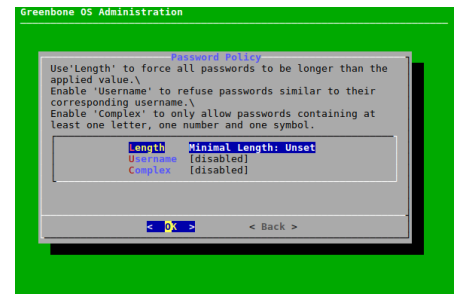
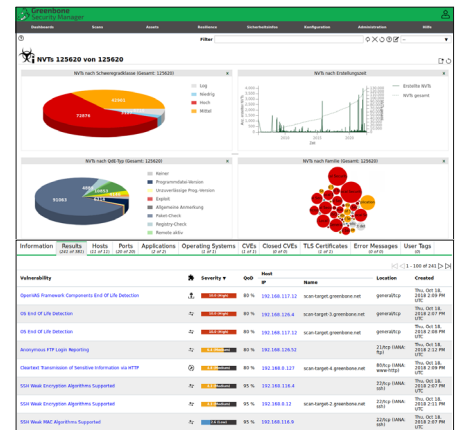
- Managing and starting scan tasks
- Report with filtering, sorting, notes, and risk scoring
- Automated scans through schedules
- Alerts, including on scan completion
- Multi-user support
- Clustering and distributed scanning via master-sensor mode
- Reports as PDF, HTML, text and XML
- Appliance performance overview

### Integration/API

- Greenbone Management Protocol (GMP), encrypted
- All user actions of the web interface available via API
- Easy integration with other applications using the API
- Simple automation via command line tools (CLI)

### Operating System Features

- Software RAID 6 for data redundancy
- Network integration and configuration
- Backup, restore, factory reset, upgrade
- Airgap function



Greenbone AG  
Neumarkt 12  
49074 Osnabrück  
Germany

Tel.: +49-541-760278-0  
E-Mail: sales@greenbone.net  
www.greenbone.net