

# Greenbone Enterprise 35

## Data Sheet

---



Greenbone

The **Greenbone Enterprise Appliance** is a vulnerability management solution that integrates seamlessly and transparently into your security strategy, providing vulnerability assessment and threat management capabilities.

It also detects violations of corporate security policies and regulations. With a strong focus on third-party integration and open standards, the Greenbone Enterprise Appliance is a best-in-class security solution that enhances and complements your security posture. Furthermore, it enables automated vulnerability management.

The **Greenbone Enterprise 35** acts as a scan sensor for appliance models from GSM 400/DECA and higher and covers up to 100 IP addresses. The operational areas are small branch offices.



## Benefits

- Turnkey solution: simple and uncomplicated setup within shortest time
- Powerful appliance operating system Greenbone OS with specially adapted, console-based administration
- Integrated Greenbone Enterprise Feed with more than 150,000 vulnerability tests with daily, automated updates
- No limit on the number of target systems or IP addresses (achievable number depends on scan pattern and scan targets)
- Subscription includes Greenbone Enterprise Support, Greenbone Enterprise Feed and upgrades for the GOS operating system

## Specifications

### Dimensions (including rack mounts)

- 480 mm x 200 mm x 45 mm

### Certification

- CE
- FCC

### Environment

- Operating temperature: 0 °C to 45 °C (32 °F to 113 °F)
- Storage temperature: -20 °C to 80 °C (-4 °F to 176 °F)
- Humidity: 10 % to 90 % (non-condensing)

### Connectivity

- 4 ports GbE Base-TX (copper)
- 1 port serial console RS-232
- 2 USB ports
- 1 HDMI connector

### Construction

- Compact chassis, heavy-duty steel
- Rackmount kit
- Integrated power supply

# Greenbone Enterprise 35

## Data Sheet



Greenbone

### Scan Capacity

- Up to 100 IP addresses in 24 h
- OpenVAS scanner for vulnerability tests and compliance audits
- CVE scanner for prognosis scans

### Supported Standards

- Network integration: SSH, SMTP (e-mail), SysLog, NTP, DHCP, IPv4/IPv6
- Vulnerability classification: CVE and CPE
- Severity classification via CVSS
- Network scans: WMI, LDAP, RADIUS, HTTP, SMB, SSH, TCP, UDP, etc.
- Compliance policies: CIS Benchmarks, IT-Grundschutz, BSI TR-03116 etc.

### Management via Master's Graphical Web Interface

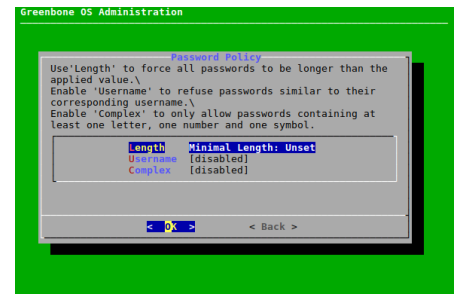
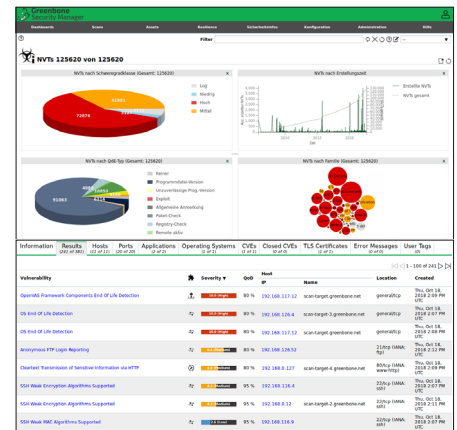
- Managing and starting scan tasks
- Report with filtering, sorting, notes, and risk scoring
- Automated scans through schedules
- Alerts, including on scan completion
- Multi-user support
- Clustering and distributed scanning via master-sensor mode
- Reports as PDF, HTML, text and XML
- Appliance performance overview

### Integration/API

- Greenbone Management Protocol (GMP), encrypted
- All user actions of the web interface available via API
- Easy integration with other applications using the API
- Simple automation via command line tools (CLI)

### Operating System Features

- Network integration and configuration
- Factory reset and Upgrade



Greenbone AG  
Neumarkt 12  
49074 Osnabrück  
Germany

Tel.: +49-541-760278-0  
E-Mail: sales@greenbone.net  
www.greenbone.net