

MIMESweeper™ for SMTP 5.3

Effective Data loss prevention in a complex e-mail infrastructure



"Great for the Enterprise"
SC Magazine, May 2006

MIMESweeper for SMTP e-mail software is an extremely sophisticated e-mail management and control system. No other e-mail solution addresses so comprehensively the complex policy, processes and procedures that larger distributed enterprises face, or provides the flexibility to tailor day-to-day operational management of your e-mail infrastructure to your specific organizational needs.

MIMESweeper for SMTP provides total control over your e-mail environment by coupling together the best security and content filtering technologies into one seamless solution. Together these tools help you to standardize your communication policies, enforce appropriate e-mail interactions, protect your sensitive documents and ensure that your reputation is not damaged by mistakes, or attempted malicious data leakage activity.

And, unlike other data loss and prevention technologies, MIMESweeper for SMTP provides rapid e-mail messaging protection with minimal impact on your existing business practices and an immediate return on your e-mail infrastructure investment. No other e-mail security solution offers such highly flexible deployment capabilities, or is designed to enhance and robustly enforce your existing regional social and legal rules so easily whilst offering sophisticated global roles based management controls.

Filtering and monitoring all document exchanges.

The depth of document payload control within MIMESweeper for SMTP is second to none with its document and file recognition and disassembly code generally considered to be the best in the e-mail content filtering field.

If somebody writes something anywhere in a document, MIMESweeper finds it, no matter how it's hidden or buried inside other files. The MIMESweeper engine is able to disassemble and inspect the entire contents of hundreds of different file types as well as recognize watermarks, IPR, PCI, PII and hundreds of other protected document tags. The Lexical analysis engine may be tuned to look at predefined HIPAA, SEC, and SOX lists as well as isolate key words in document properties, headers, footers and body text. Combined with state of the art search functions and CONTENTSafe's document fragment detection the control over sensitive data information assets passing through your e-mail systems is second to none.

Total communication integrity

The MIMESweeper solution with EXCHANGEmanager provides dual level protection controls over protected documents, stopping them as they move about inside your company and at the gateway. Every single message is tracked, monitored, filtered and audited.

The MIMESweeper solution with Clearswift CONTENTSafe extends that functionality to extracts or cut and pasted fragments of sensitive documents providing total communication integrity.

And, MIMESweeper's capability to completely monitor and audit e-mail message flows is supported by sophisticated reporting tools that track information breaches and identify the individuals and departments that have not complied with policy. While, automated alerting allows an immediate response to violations, aided by automatic delegation into the hands of the right information policy specialist nominated to handle that violation.

MIMESweeper for SMTP lets organizations set policy for individuals, teams, business units, divisions and regions all related to your central policy goals but sensitive to local variations in business practice. For instance, implementing a blanket policy for viruses but varying the spam controls by country to comply with local laws, or varying document control policies not just by job title, division or department but also by an identifiable project group - so for instance an M&A team are protected by a different policy during their brief time together, or the Treasury department are restricted on the e-mails they send to Traders.

The Issues:

Security Protection: Viruses, Trojans and malicious code are all transmitted by e-mail.

Spam and productivity: Spam kills user and administrator productivity and now accounts for over 90% of the mail e-mail sent to enterprises. While to reduce IT administration, and be scalable, policy violations need to be delegated to line of business specialist expertise.

Information control: The MIMESweeper content engine allows you to inspect in-depth all of your e-mail traffic to ensure users are not mistakenly, or maliciously, attaching or exchanging inappropriate e-mail and with Clearswift CONTENTSafe extends protection to sensitive materials.

Compliance: Regulations make every organization accountable for how information is shared, stored and distributed between senders and recipients. Not being able to apply policy on an e-mail's routing and payload means an organization will never be compliant. And, if you cannot monitor, track and apply audit trails to all messages achieving compliance is impossible too.

Legal liability: Inappropriate e-mail may be inbound, outbound or internal and it can all lead to litigation and reputational damage.

MIMESweeper™ advantage:

- MIMESweeper, best-of-breed e-mail content filtering controls for complete sender, recipient and payload analysis for effective data loss prevention and message routing control.
- Sensitive document data loss prevention with Clearswift CONTENTSafe™
- Secures inbound, outbound and internal e-mail message flows (Exchange & Domino).
- Full message tracking, monitoring, alerting and auditing.
- Roles based management and workflow processes.
- Comprehensive reporting and Auditing.
- Fully consolidated management across multiple gateways.
- Exceptional scalability, easily manages 100,000+ users.
- Inherited policy framework provides exceptional flexibility.
- Easy management of different multi-regional, country and local policies.
- Intuitive web-based management console.
- Low Total Cost of Ownership.

MIMESweeper™ for SMTP 5.3

Controlling internal e-mail exchanges with EXCHANGEmanager™

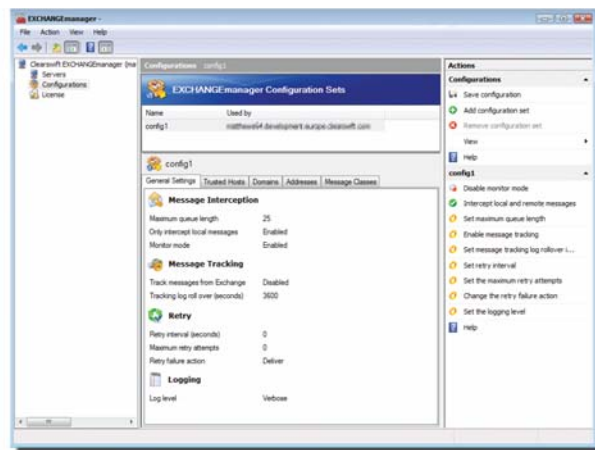
MIMESweeper for SMTP applies policy no matter where e-mail traffic is being sent or received. It comes with the option of our EXCHANGEmanager interceptor module to apply policy and filter all your internal e-mail traffic as thoroughly as inbound or outbound traffic.

Image Scanning with IMAGEmanager™

MIMESweeper for SMTP also offers an optional IMAGEmanager plug-in to analyze any images and apply policy to those images within an e-mail, or embedded in an attached file. It also has the facility for images to be added to its image database with specific policy rules incorporated over their transfer permissions by e-mail.

What's new in Version 5.3?

- Microsoft Exchange 2007 support
- Microsoft Office 2007 and Open Office document support
- Specific lexical scanning area controls for document properties, headers, footers and body text
- Increased Encrypted, Multi-media, Image and Message type detection
- New Data Leak controls covering PCI, PII, HIPAA, SEC, and SOX lists
- New Data Loss Prevention capabilities with optional Clearswift CONTENTsafe™
- More granular roles based administration of up to 1200 multiple email domains
- Increased Edge Server management integration
- PMM enhancements including Swedish, Russian, Polish, Slovenian, Czech, Greek, Dutch and Danish language support



EXCHANGEmanager™ cluster aware integration into Exchange System Manager

Clearswift CONTENTsafe™

And, last but not least, there is Clearswift CONTENTsafe a way of ensuring that all sensitive information is registered and that no part of it may be communicated via e-mail to those with no clearance to do so.

Free trial, or find out more?

A free trial of MIMESweeper for SMTP and all its components is available for download from the Clearswift website at:

<http://www.clearswift.com/products/msw/smtp/eval/default.aspx>

On the same web page you will also find additional information and demonstrations of the Personal Message Manager, Web Management UI and the Policy Editor functions plus the documentation you will need set-up your evaluation

Alternatively please call us directly at one of our offices below.

Contact Clearswift

United States

161 Gaither Drive, Centerpointe, Suite 101
Mt. Laurel, NJ 08054, UNITED STATES
Tel: +1 800 982 6109 | Fax: +1 888-888-6884

United Kingdom

1310 Waterside, Arlington Business Park, Theale,
Reading, Berkshire, RG7 4SA
Tel: +44 (0) 11 8903 8903 | Fax: +44 (0) 11 8903 9000

Spain

Cerro de los Gamos 1, Edif. 1
28224 Pozuelo de Alarcón, Madrid
Tel: +34 91 7901219 / +34 91 7901220 | Fax: +34 91 7901112

Germany

Amsinckstrasse 67, 20097 Hamburg
Tel: +49 40 23 999 0 | Fax: +49 40 23 999 100

Australia

Level 5, Suite 504, 165 Walker Street,
North Sydney, New South Wales, 2060
Tel: +61 2 9424 1200 | Fax: +61 2 9424 1201

Japan

Hanai Bldg. 7F, 1-2-9, Shiba Kouen Minato-ku
Tokyo 105-0011
Tel: +81 (3) 5777 2248 | Fax: +81 (3) 5777 2249